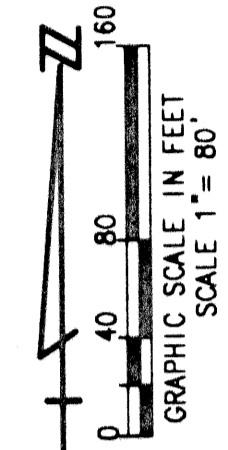
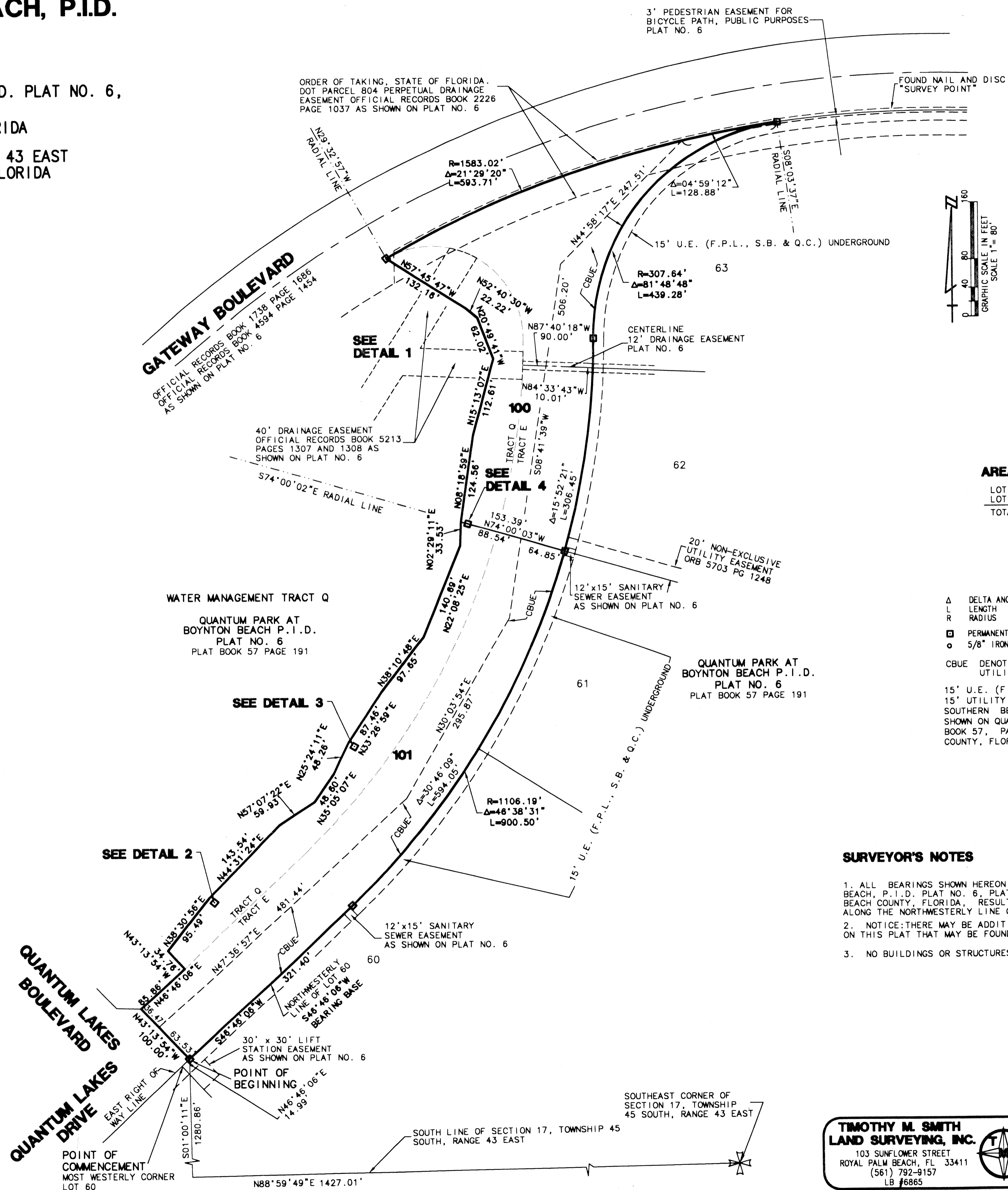
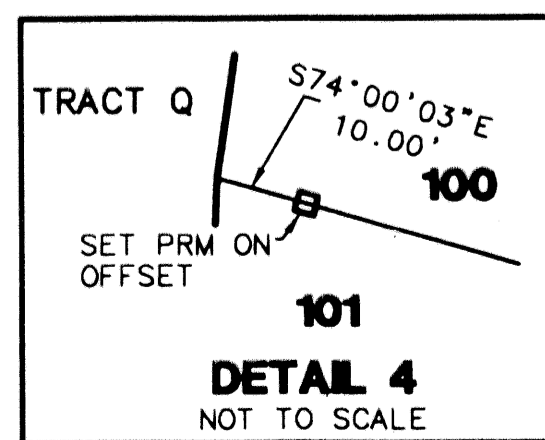
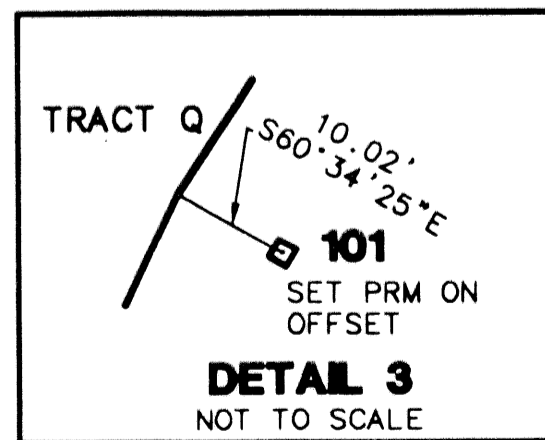
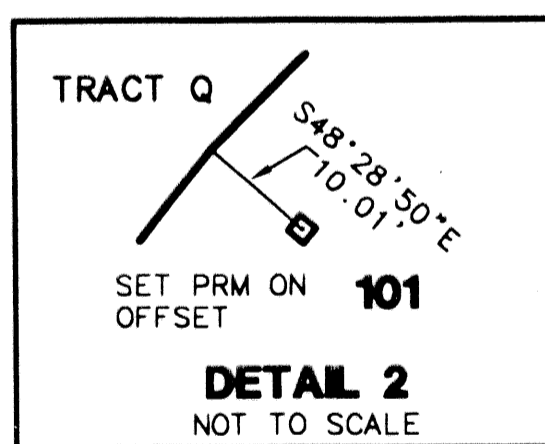
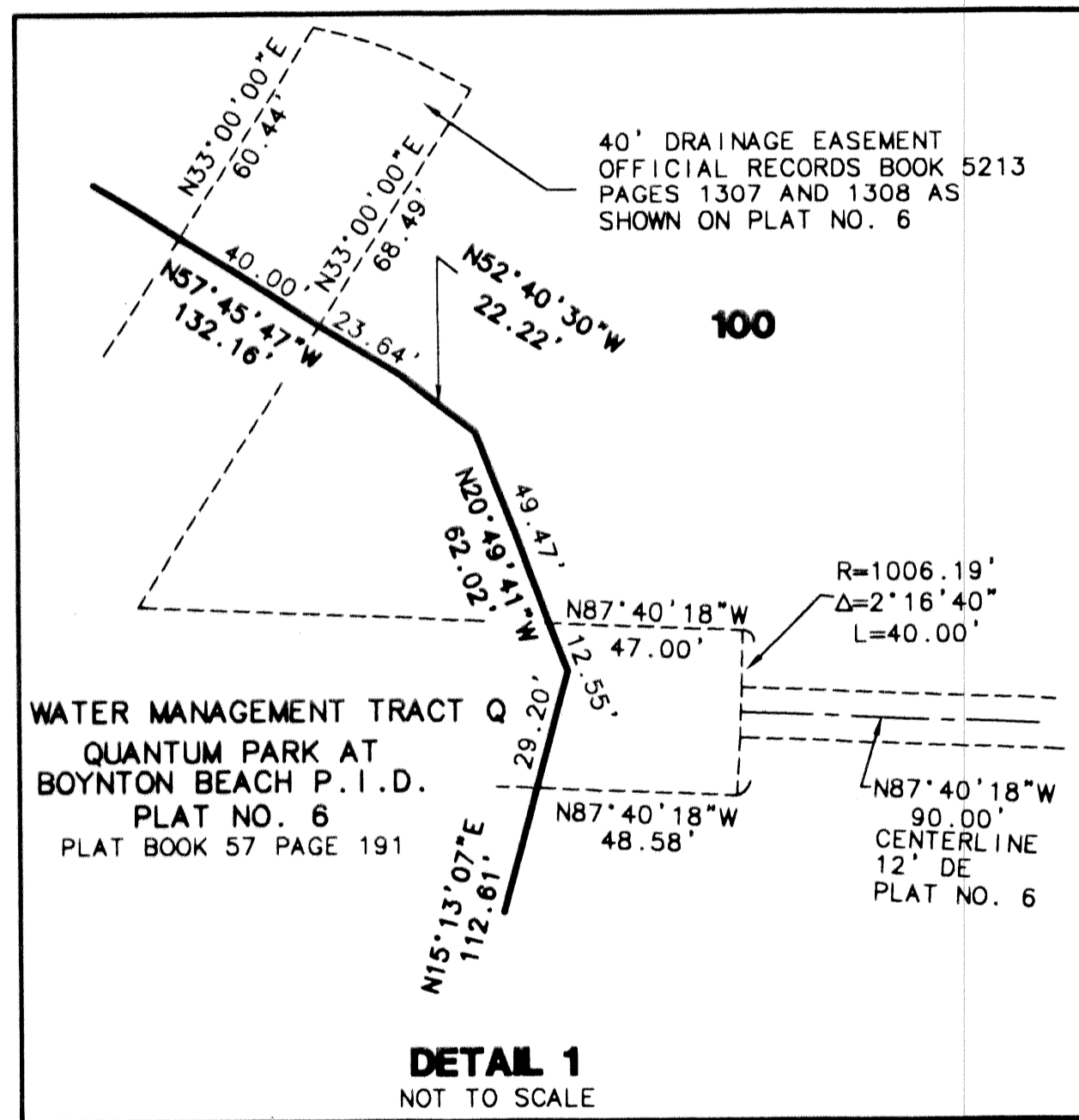


QUANTUM PARK AT BOYNTON BEACH, P.I.D. PLAT NO. 6 REPLAT NO. 1

BEING A REPLAT OF A PORTION OF
TRACTS Q AND E, QUANTUM PARK AT BOYNTON BEACH, P.I.D. PLAT NO. 6,
PLAT BOOK 57 PAGES 191 THROUGH 193
PUBLIC RECORDS OF PALM BEACH COUNTY, FLORIDA
LYING IN SECTION 17, TOWNSHIP 45 SOUTH, RANGE 43 EAST
CITY OF BOYNTON BEACH, PALM BEACH COUNTY, FLORIDA

JANUARY 2002 SHEET 2 OF 2



AREA TABULATION

LOT 100	2.326 ACRES
LOT 101	2.912 ACRES
TOTAL	5.238 ACRES

- LEGEND**
- Δ DELTA ANGLE
 - L LENGTH
 - R RADIUS
 - PERMANENT REFERENCE MONUMENT NO. LB 6865
 - 5/8" IRON ROD WITH LB 6865 CAP
 - CBUE DENOTES CITY OF BOYNTON BEACH UTILITY EASEMENT
 - 15' U.E. (F.P.L., S.B. & Q.C.) UNDERGROUND DENOTES 15' UTILITY EASEMENT, FLORIDA POWER & LIGHT COMPANY, SOUTHERN BELL AND QUANTUM COMMUNICATIONS, INC., AS SHOWN ON QUANTUM PARK AT BOYNTON BEACH, P.I.D., PLAT BOOK 57, PAGE 191, PUBLIC RECORDS OF PALM BEACH COUNTY, FLORIDA

- SURVEYOR'S NOTES**
- ALL BEARINGS SHOWN HEREON ARE BASED ON QUANTUM PARK AT BOYNTON BEACH, P.I.D. PLAT NO. 6, PLAT BOOK 57, PAGE 191, PUBLIC RECORDS OF PALM BEACH COUNTY, FLORIDA, RESULTING IN A BEARING OF SOUTH 46°46'06" WEST ALONG THE NORTHWESTERLY LINE OF LOT 60.
 - NOTICE: THERE MAY BE ADDITIONAL RESTRICTIONS THAT ARE NOT RECORDED ON THIS PLAT THAT MAY BE FOUND IN THE PUBLIC RECORDS OF THIS COUNTY.
 - NO BUILDINGS OR STRUCTURES SHALL BE PLACED WITHIN EASEMENTS.

SHEET 2 OF 2

TIMOTHY M. SMITH LAND SURVEYING, INC. 103 SUNFLOWER STREET ROYAL PALM BEACH, FL 33411 (561) 792-9157 LB #6865		SCALE: 1"=80'
		DATE: AUG 2001
		DIRECTORY: QUANTLOT
		FIELD BOOK: N/A
		DWG NO.: 7L0TRP01